

20 Meter DX Net Control Walter - DF4IZ

Inside this issue:

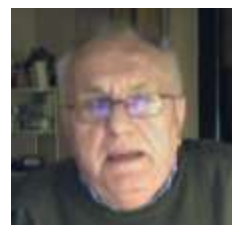
Walter - DF4IZ	1
Net Preamble & Closing	2
January Net Schedule	3
K8DSS - Florida's Shack	3
February Net Schedule	4
Merle - W4MWZ	4
March Net Schedule	5
Rick's '92 Corvette	5
Keith - WA8USC	6
RMS Express / Winmor	7
Corvette Corner - Armin	8
Ray - K1RAY	9
Joe - W8DCQ	10



Join us on 20 meters (14.277 MHz +/- 5 kHz). Our DX Net starts at 16:15Z on Tuesday mornings. That's 11:15 AM EST or 10:15 AM CST. Walter has a nice station & 5 element Yagi on a big tower in the back yard. See the picture below.



If you can't make it on 20 meters, join us via Skype video. Walter's Skype address is: "walterdf4iz".



Skype Photo taken by WØPC, 12/27/10



The GM Nets meet daily Monday through Saturday on 7.277.5 MHz at 18:00Z and Tuesdays on 14.277 +/- QRM at 16:15Z.

Would you like to help out
with Net Control Duties?
Contact our Net Manager
George, KB9VF
kb9vf@Comcast.net

Net Preamble & Closing



Net Control Stations:

George, KB9VF
Rick, WØPC
Ray, K1RAY
Verle, K8VW
Chuck, WA8IHI
Bill, WB9YUR
Art, KC8JLC
Denny, N8XLS
Bill, WD9AIH
Phil, W9MPA
Ed, K8DSS
Bob, K8MPV
George, N8NPW

Net Preamble

This is (your call), today's net control. This net is composed of employees and retirees of the General Motors Corporation .

This net meets daily on this frequency for the purpose of getting better acquainted, expanding our knowledge, and improving our operating techniques. We promote friendship among participants in many locations who have many talents and have or have had a variety of work assignments. The General Motors nets are international in scope on some bands, and visitors are always welcome to check in. Please stay carefully tuned to net control at all times. This is (your call) (working for or retired from) (your) Division in (your city), (state). My home QTH is (where you live). My name is (your name) and we will now take check-ins, one at a time, please.

Net Closing

Are there any late check-ins for the net? (pause for late check-ins). Is there any further business for the net? (pause for any further business) Having no further business, we will close the net at this time. This net is composed of General Motors employees, retirees, and visitors. We meet each day, Monday through Saturday, on or about this frequency, at (1700z or **1800z**). Thank you for your participation and please return often. This is (your call) now closing the net. 73 and Good Afternoon.

**I can hear you finally ... The bands are waking up!
Join US at 1800Z On 7.277.5 MHz**

Net Control Schedule

January 2011						
Sunday	Monday	Tuesday	Wednesday	Thursday	Friday	Saturday
26 Notes: Nets on 7.277.5 MHz, 18:00Z	27	28	29	30	31	1 <i>New Year's Day</i> Straight Key Night WØPC - Rick
2	3 K8VW- VERLE	4 DF4IZ – WALTER KB9VF- GEORGE	5 K1RAY – RAY	6 N8XLS – DENNY	7 KC8JLC – ART	8 RTTY Roundup W9PMA – PHIL
9 RTTY Roundup	10 WB9YUR – BILL	11 DF4IZ – WALTER WA8IHI – CHUCK	12 N8NPW – GEORGE	13 K8MPV – BOB	14 WD9AIH – BILL	15 KB9VF- GEORGE
16	17 <i>Martin Luther King, Jr</i> K8VW- VERLE	18 DF4IZ – WALTER K1RAY – RAY	19 WD9AIH – BILL	20 N8XLS – DENNY	21 KC8JLC – ART	22 VHF Sweepstakes WB9YUR – BILL
23 VHF Sweepstakes	24 WA8IHI – CHUCK	25 DF4IZ – WALTER N8NPW – GEORGE	26 K8MPV – BOB	27 KB9VF- GEORGE	28 WØPC - Rick	29 CQ WW 160 - CW K8VW- VERLE
30 CQ WW 160 - CW	31 K1RAY – RAY	Notes: Schedule with DF4IZ (Walter), Tuesday at 1615z - on 14.277 + or - 5 kHz				

K8DSS's Florida Shack

My "shack" is in a so-called office armoire in our den, but it works!

Ed - K8DSS

The K3 is enjoying Florida too



February 2011

Sunday	Monday	Tuesday	Wednesday	Thursday	Friday	Saturday
30 Notes: Nets on 7.277.5 MHz, 18:00Z	31	1 DF4IZ - Walter N8XLS - Denny	2 <i>Groundhog Day</i> WD9AIH - Bill	3 KC8JLC - Art	4 W9PMA - Phil	5 WA8IHI - Chuck
6	7 N8NPW - George	8 DF4IZ - Walter K8MPV - Bob	9 W0PC - Rick	10 KB9VF - George	11 K8VW - Verle	12 CQ WW WPX - RTTY K1RAY - Ray
13 CQ WW WPX - RTTY	14 <i>Valentine's Day</i> School Club Roundup WD9AIH - Bill	15 <i>School Club Roundup</i> DF4IZ - Walter N8XLS - Denny	16 <i>School Club Roundup</i> W9PMA - Phil	17 <i>School Club Roundup</i> WB9YUR - Bill	18 <i>School Club Roundup</i> WA8IHI - Chuck	19 <i>ARRL DX Contest - CW</i> N8NPW - George
20 <i>ARRL DX Contest - CW</i>	21 <i>Presidents' Day</i> K8MPV - Bob	22 DF4IZ - Walter W0PC - Rick	23 KB9VF - George	24 K8VW - Verle	25 K1RAY - Ray	26 CQ WW 160 - PH WD9AIH - Bill
27 CQ WW 160 - PH	28 KC8JLC - Art	Notes: Schedule with DF4IZ (Walter), Tuesday at 1615z on 14.277 + or - 5 kHz				

An Email from an Old Friend:

Rick, I read with interest and really enjoyed the Newsletter

I have just about finished up my duties with the Coast Guard Auxiliary and will be spending my time enjoying Amateur Radio again. I hope to have an antenna up in late December or January. I'm looking forward to hearing the guys that were regulars back when I was a regular check-in and also meeting the new members to the net. I have included an article I was working on for the local Flotilla newsletter. Then the editor of our newsletter rewrote it and it was printed in a National Coast Guard Auxiliary Newsletter.

The Vessel Tracking System is used to help locate a vessel when it sends out a distress call on its VHF-FM Marine Band Radio. When our Coast Guard Auxiliary Vessels are on Patrol the Watchstander can send a Position Request to that Vessel and the vessel returns it's Latitude and Longitude that is displayed on a Chart on the Computer.

Chalmers, a Ham from back in the 30's, designed the system and had it working at his flotilla when I became involved in putting in a system at our Flotilla. Some small changes were made and our Computer operating system is Windows 7 which caused much grief in getting the Tracking System to operate. We had a lightning strike in April that put us behind in our progress. The computer was repaired and the radio manufacturer had problems in repairing their own radio, they repaired and returned the radio four times. We finally got a replacement in September (a newer model) and everything is operating as scheduled.

Merle W4MWZ

March 2011

Sunday	Monday	Tuesday	Wednesday	Thursday	Friday	Saturday
Notes: Nets on 7.277.5 MHz, 18:00Z		1 DF4IZ - Walter WB9YUR - Bill	2 WA8IHI - Chuck	3 N8NPW - George	4 K8MPV - Bob	5 ARRL DX Contest - Ph W0PC - Rick
6 ARRL DX Contest - Ph	7 KB9VF - George	8 DF4IZ - Walter K8VW - Verle	9 <i>Ash Wednesday</i> K1RAY - Ray	10 N8XLS - Denny	11 WD9AIH - Bill	12 W9PMA - Phil
13 <i>Daylight Savings Begins</i>	14 WB9YUR - Bill	15 DF4IZ - Walter WA8IHI - Chuck	16 N8NPW - George	17 <i>St. Patrick's Day</i> K8MPV - Bob	18 W0PC - Rick	19 KB9VF - George
20 <i>First Day of Spring</i>	21 K8VW - Verle	22 DF4IZ - Walter K1RAY - Ray	23 WD9AIH - Bill	24 N8XLS - Denny	25 KC8JLC - Art	26 CQ WW WPX - SSB WB9YUR - Bill
27 CQ WW WPX - SSB	28 WA8IHI - Chuck	29 DF4IZ - Walter N8NPW - George	30 K8MPV - Bob	31 W0PC - Rick	Notes: Schedule with DF4IZ (Walter), Tuesday at 1615z on	

Here's Rick's (W0PC) entry for the GM Net Corvette Club. 1992 Convertible



Keith - WA8USC



Introducing Keith, WA8USC

Keith Loreno Sr., has been an amateur radio operator since 1964 when he first became interested in the hobby. He currently resides in Sandusky, Ohio with his wife and son who are also amateur radio operators. Keith Sr. is a member of the WB8LLY Sandusky Amateur radio club and currently serves as their Trustee. He has enjoyed his hobby in amateur radio and has established contact with ham operators all over the globe from Hungary to Japan as well as all over the USA. He even had the opportunity to speak one-on-one with the late King Hussein of Jordan. His hobby has enabled him to enjoy activities such as the annual Field Day, which brings all ham operators together, SET (Simulated Emergency Test) in October, The GM Net, and the WB8LLY Sunday Night Net on 2-meters. Keith has taken an active role in preparing for disaster situations with Homeland Security for Erie County. Keith Sr. spends at least one hour a day navigating the airwaves from his comfortable ham shack which is in the front sun porch of his one hundred plus year old home. His shack is very well equipped with a: Kenwood TS-2000, Kenwood TS-570, ICOM IC-2200H 2-meter and an ICOM IC-8000 2-meter. His antenna's are the Mosley 3 Element Beam, Mini 33 20/15/10 HF, MFJ 1175 Rotatable Dipole 6-Band 40/20/15/10/6/2, Cushcraft ARX 2B 2-Meter VHF vertical, Diamond X260A 2-meter, Van Gordon G5RV 3.5-3.0/100' CBL and of course the "Denny G5RV- Home Brew" best antenna. Keith also has an ornery squirrel which he has named Chainsaw that just loves to bite through coax cables and cause havoc in the spring and fall. He feeds him too much good food and when he is done eating he uses the ropes that help to tie up his antennas for flossing his teeth. Keith Sr. is always eager to establish contact with other ham operators that are just as enthusiastic as he is while passing good will and a friendly QSO at the end of each conversation.

From: Denny, N8XLS, DEN8XLS@aol.com

RMS Express with WINMOR Now Available for Winlink 2000

06/22/2010

The [Amateur Radio Safety Foundation](#) (ARSFI) has announced the availability of *RMS Express* user software with WINMOR, a new radio-email application for use with the Winlink 2000 network.

The WINMOR protocol was introduced at the 2008 ARRL/TAPR Digital Communications Conference in Chicago. The goal of the WINMOR development effort was to create a soundcard digital mode that would provide an alternative to PACTOR for accessing the Winlink 2000 network. After two years of beta testing, WINMOR TNC, a software-based “helper application”, is now available as part of the new Winlink *RMS Express* user software suite.

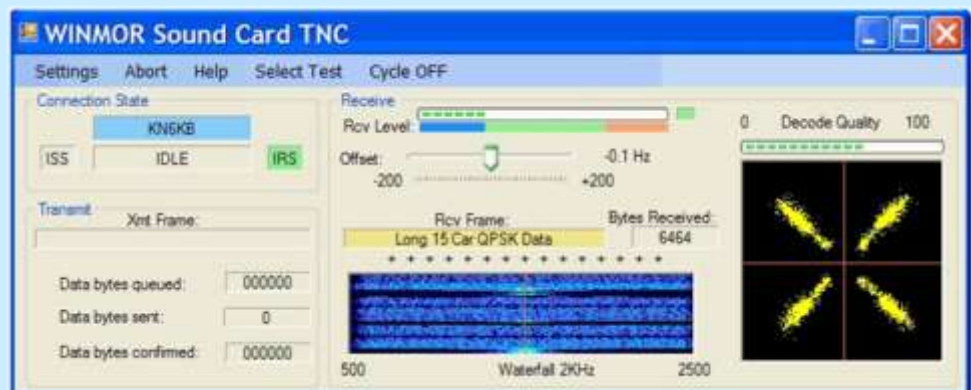
For a number of years hams who’ve accessed the Winlink network on the HF bands have used PACTOR, primarily PACTOR II or III. This required the purchase of an external hardware modem. With the advent of WINMOR, no external hardware is required other than the same type of interface used for other sound-card-based digital communication modes.

The WINMOR protocol and the RMS Express application were developed by Rick Muething, KN6KB and Vic Poor, W5SMM. It includes innovative features such as a “busy frequency” detector to reduce potential interference. A complete description of the WINMOR protocol is available [here](#).

In addition to WINMOR, the *RMS Express* suite currently also supports Telnet for Internet, HSMM and D-Star connections, a wide selection of TNCs for packet radio, and SCS hardware modems for PACTOR II, and III. It also supports WINMOR peer-to-peer connections as well as connections with Winlink Radio Message Servers.

The WINMOR TNC helper application is also available separately to third party developers who wish to add the WINMOR protocol to their products.

The *RMS Express* suite for *Windows* is available free of charge. A \$39 donation to ARSFI, a non-profit 501C(3) charity, is suggested for use of the WINMOR component, but payment is not mandatory. The *RMS Express* suite and WINMOR TNC helper application can both be downloaded from the [Winlink Web site](#).



The Corvette Corner



Well you asked for it - here is our 2006 and look it is packed for a month's trip. Yes it does have luggage space. We now have 60,000 miles on it - from our short to long trips from the Spring through the Fall. 73s Armin WD8CRQ



2006 Corvette Ham Antennas

Well the one on the glass (see through glass type unit) is 2 meters there, but I can change it to dual band 2m/450 with another antenna in its place. The 2 meter has 6 short 2m counterpoises under the fiberglass - and it makes it really work. The white antenna there is a CB - but we are fooling around now - and it can be switched to 20 meters etc, with the frame being used as ground. The CB part really uses the coax as the counterpoise.

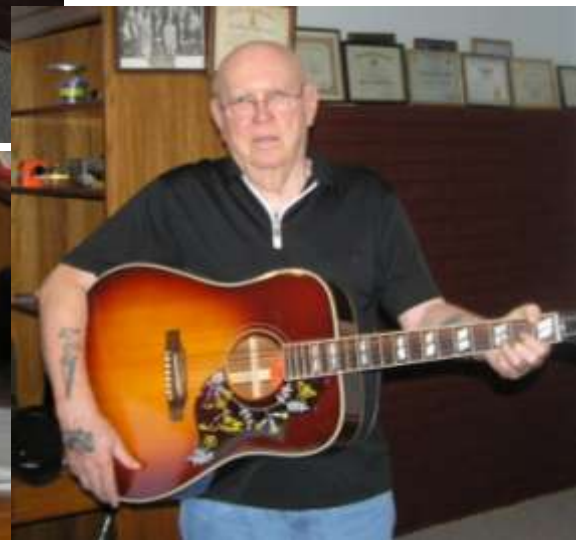
1973 Corvette: This car has been used by all the kids, grandkids and son-in-laws - hi. Its been beat up and repaired - forever!!! My wife tells me - if she knew how much money we have spent on this car - we could have had two new ones. And we are still changing things on it. We have autocrossed it at low and high speed events, bracket drag raced, caravans, car shows and done some funkhanas too - with the wife.

The complete family has had a ball with this car. And its still going and being used.



The Booming Voice of Tyrone, GA K1RAY - Ray Tompkins

You ask “ Where is Tyrone, GA?” Well it’s a little southwest of Atlanta where good 40 meter antennas and big signals grow! Lets take a look at Ray’s station. No wonder he has such a nice signal. You can always count on Ray being there to relay anyone into the net. He can hear them all.



I've never heard Ray play the Guitar, but if it's anything like he plays the ham radio, the mermaids he fishes for get a real treat. Ray has been at playing the Guitar for about as long as ham radio. Ray's Tyrone, GA QTH must have some great ground conductivity. His signal can be heard everywhere. Good Job Ray and Nice Shack. Thank go to Bob, K8MPV for the photos.

Note from the Editor: I love seeing articles and stories to share with our group. Keep them coming in. Send me and email to w0pc@aol.com. 73, Rick

When I asked for Corvette photos from our group, I thought of a few guys who I knew have or had one. Here is one of the responses that I got.

Joe says:

"I sold Twisted Sister and the new buyer trashed it when he fell asleep behind the wheel while towing it back to Michigan from a race in Louisiana. My "street rod" is a 2010 Camaro SS."

Joe, W8DCQ



Joe's Street Rod 2010 Camaro SS

Here is a tool that all hams need to have in their Jump Bag. Every ham should also carry one of these multi-knife tools in their hip pocket to make sure they are ready for Straight Key Night !

